



eleVitae

ELEVATE YOUR *Life*

COMPENSATION PLAN





Starting A Home-Based Business Has Never Been This Easy.

EleVitae gives you Premium Access to Our Digital System!

A never seen before digital system combined with a 10-Bonuses Earnings Plan that allows you to reach your goals faster than ever.



The Right Company & Partnership

EleVitae's CEO has a successful track record in the direct selling industry and real estate. Over 20 years of corporate experience and stability.



The Right Product

Our products have been carefully designed with the best quality of natural ingredients to maximize results. They are meant for daily consumption and be affordable.



The Right Compensation Plan

Multiple Ways of Earning Income, High Commission Percentages, and Sustainable.



The Right Marketing System

Easy Digital Access through App and Website, Online Shopping & Funnels, Multiple Languages, Ongoing Free Training



The Right Timing

Focused on the Highest Trends and Best Market Growth.





Our Mission

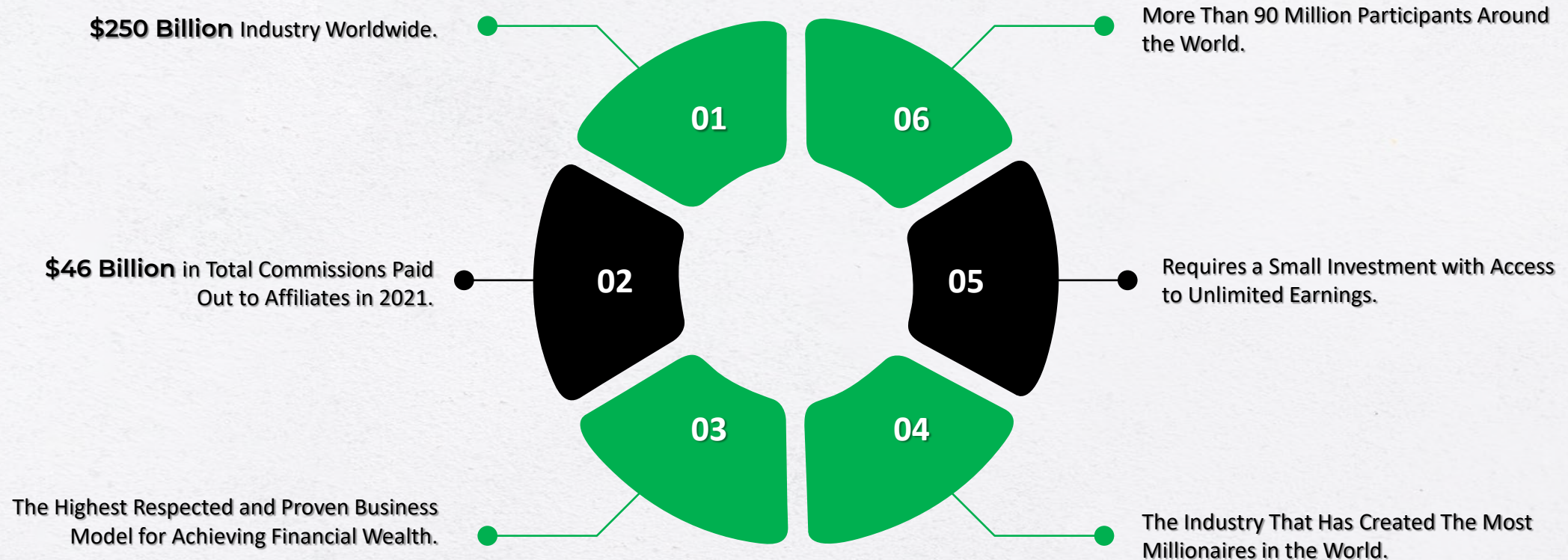
*To Empower Those Like You With the Potential For Greatness Through
Wealth + Wellness*

START YOUR PATH TO FINANCIAL FREEDOM TODAY BY BECOMING A MEMBER!





Why Network Marketing & Direct Selling Industry?





Compensation Plan

! Pays up to 90% of your Business Volume!

10 Ways to Earn:



Direct Customers

Earn up to 30% on Direct Customer Sales through Online Shop!



Fast Bonus

Earn up to 40% of volume generated by personal affiliates each week.



Plus-Play

An additional 10% of Fast Bonus from your personal affiliates when you place a monthly order on the first 5 days of the month.



VIP Generational

Earn up to 7 generational levels of Fast Bonus after having 2 active direct affiliates.



Legacy Bonus (Binary)

Earn up to 25% of the volume from your lesser leg.



Check Match Bonus

Earn up to 30% and 10 generation levels in check matching from your affiliates' Legacy Bonus.



Dream Car Club

Earn up to \$1,500 each month.



MVP Business Expense

Earn From \$2,500 to \$10,000, a Corporate Office or a Distribution Center for maintaining your rank.



Leadership Rank Bonus

Earn products or up to \$500,000 in a one-time bonus for reaching a rank your first time.



Corporate Trips & Leadership Retreats

Qualify for leadership ranks and enjoy paid travels.

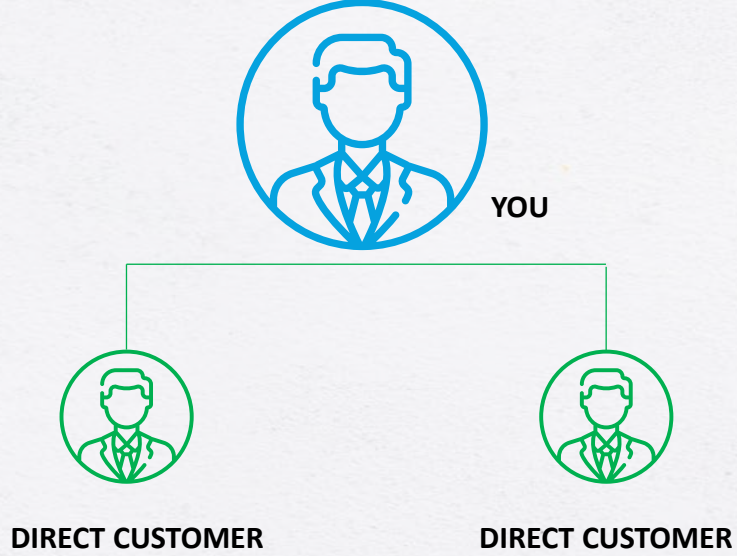
There are no guarantees regarding the income and earnings from the Elevitae Opportunity. The success or failure of all Independent Affiliates, like in any other business, depends on each Independent Affiliates' skillset and personal effect. Earning levels for Independent Affiliates are only examples and should not be considered typical or average. Earning level achievements are dependent on each Independent Affiliate's business skills, personal ambition, time, commitment, activity, and demographic factors.





Direct Customers

PAID WEEKLY



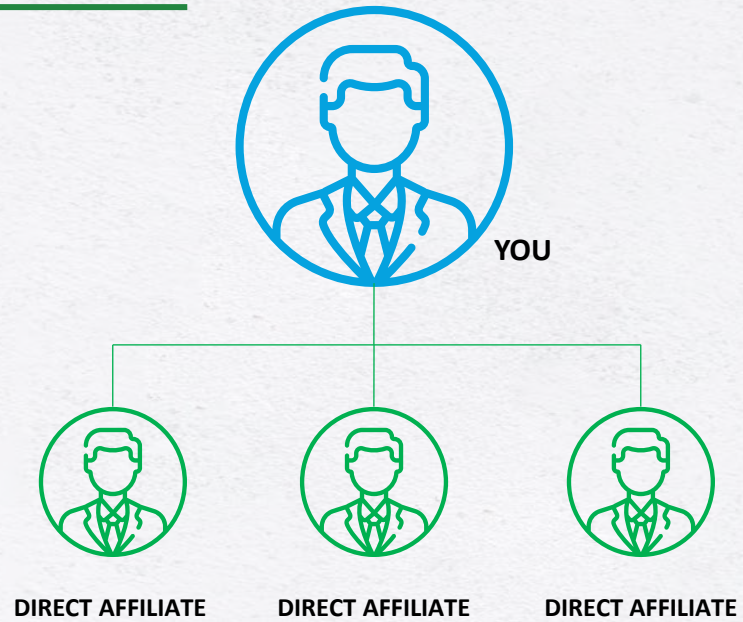
EARN **25% To 30%** FROM DIRECT CUSTOMER ON EACH PRUCHASE THROUGH YOUR ONLINE SHOP.

* Affiliates will earn the commissions from each order placed by direct customers and will receive the corresponding Personal Volume (PV) for each order.



Fast Bonus

PAID WEEKLY



EARN **40%** OF THE BUSINESS VOLUME OF EACH DIRECT AFFILIATE'S INITIAL ORDER.

EXAMPLE:

- ❖ AMBER PACK (40BV) - \$16
- ❖ JADE PACK (100BV) - \$40
- ❖ ONIX PACK (175BV) - \$70
- ❖ PEARL PACK (400BV) - \$160
- ❖ BASIC PACK (100BV) - \$40
- ❖ OPAL PACK (175BV) - \$70
- ❖ TOPAZ PACK (400BV) - \$160





Plus-Play Bonus

PAID WEEKLY

*Qualify by Placing a Personal Order
on the first 5 days of each month.*

EARN AN ADDITIONAL **10%** OF THE BUSINESS VOLUME OF EACH
DIRECT AFFILIATE'S FIRST ORDER.

EXAMPLE:

❖ AMBER PACK (40BV) - \$16+ \$4

❖ JADE PACK (100BV) - \$40 + \$10

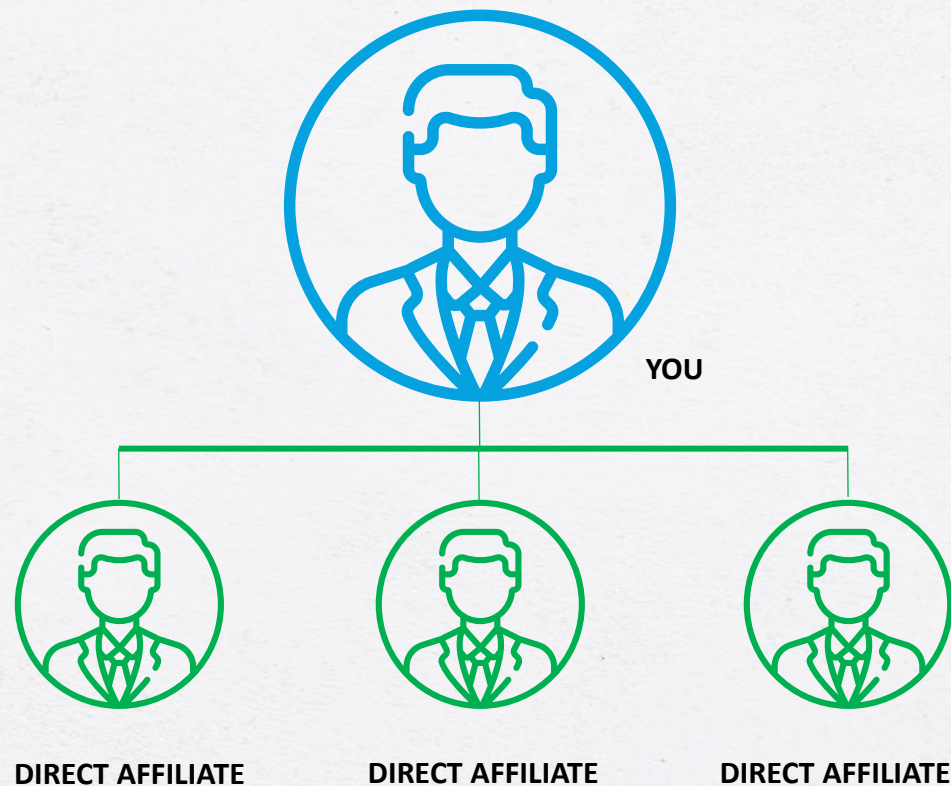
❖ ONIX PACK (175BV) - \$70 + \$17.50

❖ PEARL PACK (400BV) - \$160 + \$40

❖ BASIC PACK (100BV) - \$40 + \$10

❖ OPAL PACK (175BV) - \$75 + \$17.50

❖ TOPAZ PACK (400BV) - \$160 + \$40





VIP Gen Bonus

PAID MONTHLY

Pays Up to

75%!

- Min. 2 active affiliates to qualify.
- Earn more by reaching new ranks.
- Pays up to 75% of the first order business volume.

7 Generational Levels

	Bonus	Ranks
Gen 1	40 + 10%	Affiliate
Gen 2	10%	Gold Tier
Gen 3	5%	Team Leader
Gen 4	3%	Coordinator
Gen 5	3%	Manager
Gen 6	2%	Regional Manager
Gen 7	2%	Diamond

*To earn the Fast Bonus and VIP Gen Bonus, the affiliate needs to be active with a minimum of 40BV each calendar month.

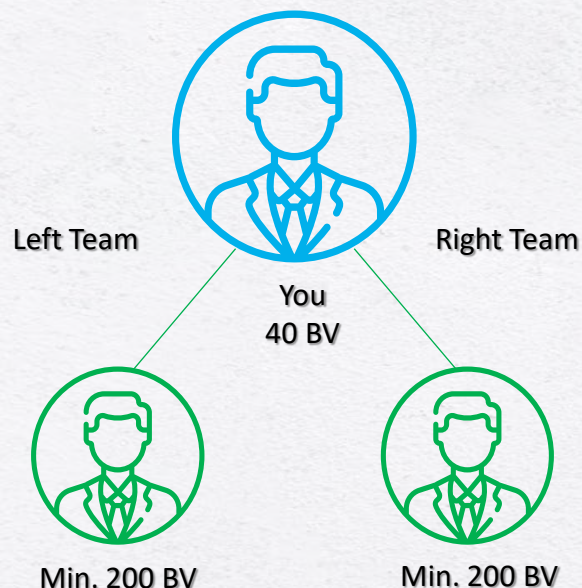


Legacy Recurring Bonus

PAID WEEKLY

Up to 25%

Genealogy Tree



*To activate the Legacy Recurring Bonus, the affiliate must have a minimum of 200BV on each team, and one (1) personal active affiliate on each team.

**To keep accumulation spill over volume, the affiliate must maintain a minimum of 40BV personal volume each calendar month.

RANK	PAID %	Weekly Maximum
Affiliate Tier	10%	\$250
Gold Tier 1K	11%	\$500
Team Leader 5K	12%	\$750
Coordinator 10K	14%	\$1,500
Manager 25K	15%	\$2,500
Reg. Manager 50K	15%	\$5,000
Diamond 100K	18%	\$10,000
Exe. Diamond 250K	18%	\$25,000
Blue Diamond 500K	20%	\$50,000
Vice President 1M	22%	\$100,000
Crown Ambass. 5M	25%	\$250,000



Check-Match Bonus

PAID MONTHLY

Pays Up to
112%

- Pays up to 10 generations deep.
- Matches percentage of earnings of Legacy Recurring Bonus.

10 Generations

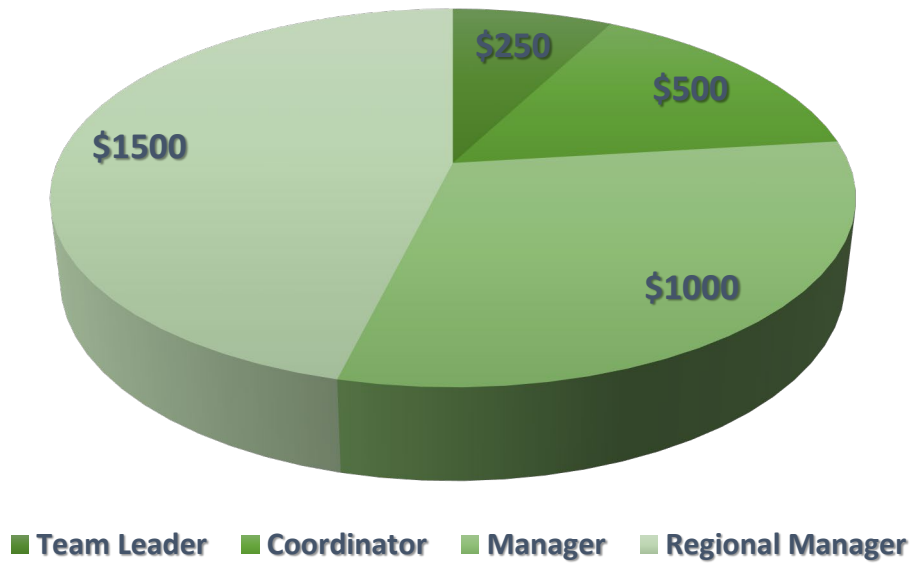
	Affiliate Tier	Gold Tier	Team Leader	Coordinator	Manager	Regional Manager	Diamond	Executive Diamond	Blue Diamond	Vice President	Crown Ambassador
Gen 1	10%	15%	20%	20%	20%	20%	25%	25%	25%	30%	30%
Gen 2	5%	10%	10%	10%	10%	10%	10%	10%	15%	15%	20%
Gen 3		3%	5%	5%	5%	5%	7%	7%	10%	10%	15%
Gen 4			1%	3%	3%	5%	5%	7%	7%	10%	10%
Gen 5				1%	3%	3%	5%	5%	7%	7%	10%
Gen 6					1%	3%	3%	5%	5%	7%	7%
Gen 7						1%	2%	3%	5%	5%	7%
Gen 8							1%	2%	3%	5%	5%
Gen 9								1%	3%	3%	5%
Gen 10										1%	3%

*The Check-Match Bonus is calculated based on the Legacy Recurring Bonus earnings from generational direct affiliates.



Dream Car Club

Monthly Bonus



Paid on the First Week after each Calendar Month

*Affiliates must maintain the rank consecutively for 60 days to qualify and maintain the rank thereafter each month.



The Dream Car Club allows the participant to receive a bonus to cover expenses on a car of their choice or preselected models. The affiliate will be required to put in the company logo (magnets are allowed).

MVP Business Expense Bonus

PAID MONTHLY

EleVitae encourages the growth and success of our affiliates. Therefore, when qualifying to the Vice President rank, the affiliates choose where to have your own Corporate Office. When an affiliate reaches Crown Ambassador, they become partners and they can choose where to place their own Distribution Center.



Paid on the First Week after each Calendar Month.

*Affiliates must maintain the rank consecutively for 60 days to qualify and each month thereafter.



Leadership Rank Bonus

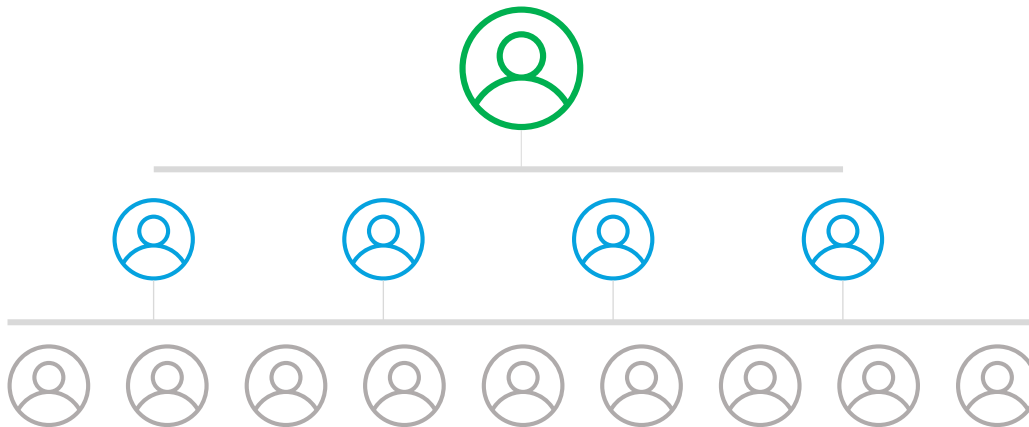
PAID ONE-TIME



*To qualify each affiliate must have a minimum of 100BV personal volume each month and must maintain the achieved rank for 90 consecutive dias.

Corporate Trips & Leadership Retreats

BUILDING A LEGACY
STARTING AT THE MANAGER RANK



Access to Private Corporate Events Including:

- Cruises
- Leadership Retreats
- Corporate Trainings



Rank Achievement Requirements



MONTHLY QUALIFICATION

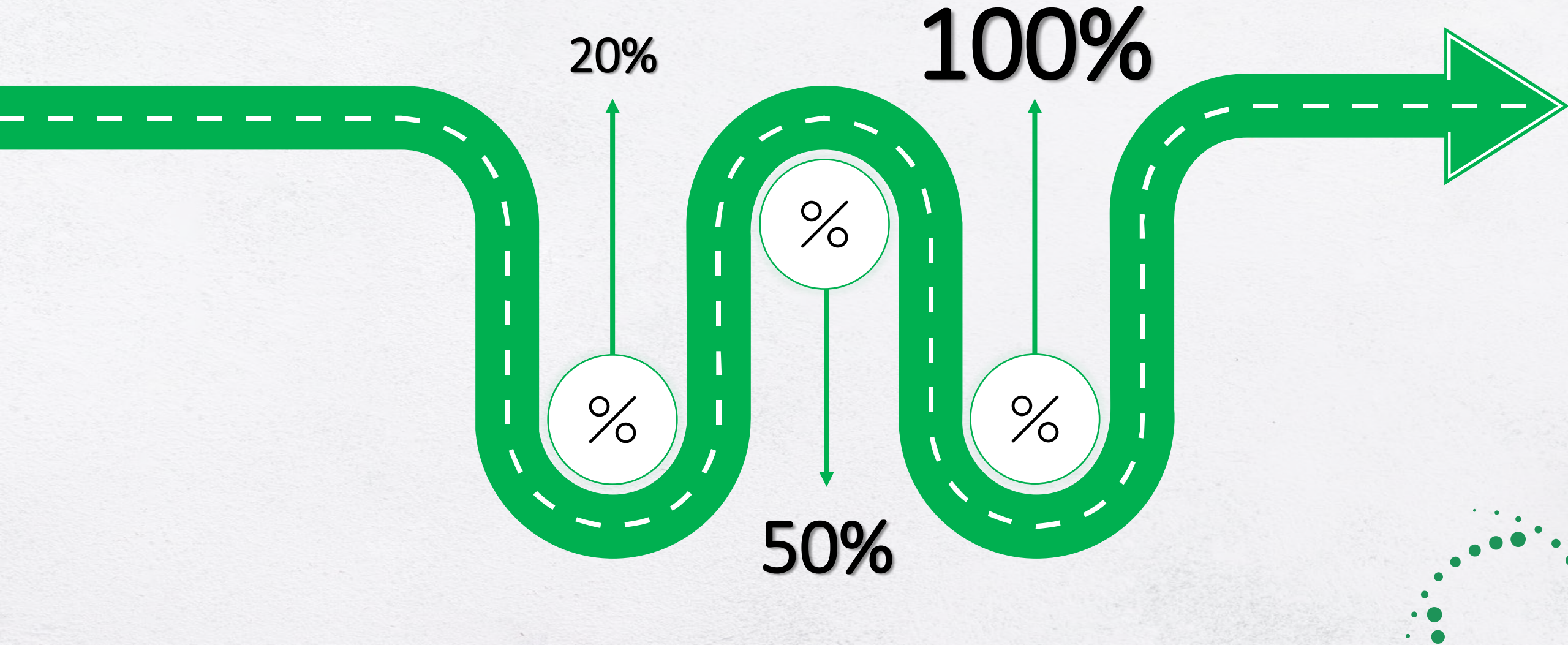
DEFINITIONS:

- ❖ **AFFILIATE:** Any member that purchases our 12-month membership and places a product order for a minimum of 40 PV. Affiliates receive 12-month free shipping with their membership.
- ❖ **BINARY:** A structure used for our compensation plan that consists of building two teams where the volume is accumulated to the right and left. This structure is used for bonuses and rank requirements.
- ❖ **BUSINESS VOLUME (BV):** Volume corresponding to orders placed by affiliates. This volume is used for rank qualifications, and bonuses.
- ❖ **DIRECT AFFILIATES:** In order to qualify for a new rank, the affiliate must have the required personally sponsored affiliates with the required ranks.
- ❖ **DIRECT CUSTOMERS:** Individuals that visit our online store and place orders through any Affiliates Membership ID code. Direct customers are required to pay shipping fees.
- ❖ **LESSER TEAM:** Refers to the team with less monthly volume on the binary structure (Legacy Recurring).
- ❖ **MEMBERSHIP:** A 12-month membership which provides access to online digital system and free shipping for the subscription period.
- ❖ **PERSONAL VOLUME (PV):** Volume corresponding to personal orders. Direct Customer orders will count for the affiliate's personal volume.
- ❖ **SPILL OVER VOLUME:** Remaining volume after the bonuses have been calculated. The remaining volume is accumulated for the next month.

RANKS	Monthly Personal Volume	Minimum Direct Affiliates	Minimum Monthly Volume Lesser Team
Affiliate Tier	40 PV	0	0
Gold Tier 1K	40 PV	2 Affiliates	500
Team Leader 5K	100 PV	2 Pearl/ Topaz	2,500
Coordinator 10K	100 PV	1 Team Leader	5,000
Manager 25K	100 PV	3 Team Leader	12,500
Reg. Manager 50K	100 PV	2 Coordinator	25,000
Diamond 100K	100 PV	2 Manager	50,000
Exe. Diamond 250K	100 PV	1 Reg. Manager	125,000
Blue Diamond 500K	100 PV	2 Diamond	250,000
Vice President 1M	100 PV	3 Diamond	500,000
Crown Ambass. 5M	100 PV	2 Blue Diamond	2,500,000



How Much Would You Like to Earn For The Same Effort?





A Successful Business

As Easy as 1, 2, and 3!



Register as an Affiliate

(Purchase the membership and a Start-up Pack, setup your Launch Party and Start Sharing)



Qualify each month for the VIP GEN Bonus.

(Maximize your earnings from initial orders)



Download the ELEVITAE APP

(Have complete access to your business at your fingertips)



Thank you
